

**Air Flow**  
**Cash Flow**  
**You're in Business**

**Self-insuring** means a dramatic savings on workers' compensation premiums and releases your cash from the tight grip of prepayments.

By joining a Self-Insured Workers' Compensation Trust, small to mid-sized employers are able to realize the same benefits, control and savings as larger corporations.

Call today for information and a cost comparison of your current workers' compensation program

**immediate savings**  
**independent rates**

**direct benefits**



New York  
 Compensation Managers, Inc.

**315-699-8475**

[www.workerscomp.com](http://www.workerscomp.com)

**Two Join ABR**



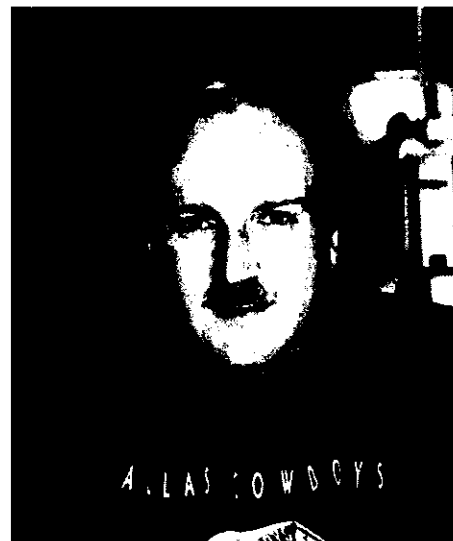
*Lisa Shearing*

**Lisa Shearing** and **Jim Lefler** have joined ABR Wholesalers as counter sales people.

After working in truck parts distribution, Lisa moved to Betlem Service, where she worked for three years before joining ABR. Besides counter sales, she will also be handling warranty claims. When not at work, Lisa enjoys skiing and reading.

Jim brings to ABR a decade of counter sales experience at Jordan Supply and V. J. Stanley. He lives in West Irondequoit with his wife Kathy and two children.

The Leflers are also expecting a new addition to the family, who will probably have arrived by the time you read this. In his spare time, Jim



*Jim Lefler*

enjoys playing softball and golf in the summer and bowls in the winter.

**HM CROSS & SONS**

[www.HMCROSS.com](http://www.HMCROSS.com)

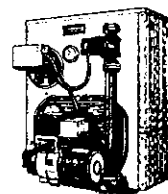
We Carry Huge Stocks of...

- V-Belts
- Sheaves
- Variable Speed Sheaves
- Pillow Block Bearings
- Keyed Shafting
- Lubricants & Cleaners
- AC Variable Speed Drives

(716) 424-5500 • Fax (716) 424-6928  
 50 Ridgeland Road • Rochester, NY 14623

**THE SPECIALISTS**

**In Heating, Air Conditioning And Refrigeration Supplies & Equipment**



**Burnham**  
AMERICA'S BOILER COMPANY



**Rinnai**

**SANYO**

**105 Hudson Ave., Rochester, NY • Sales 1-888-749-4822 • Parts (716) 232-4980**